

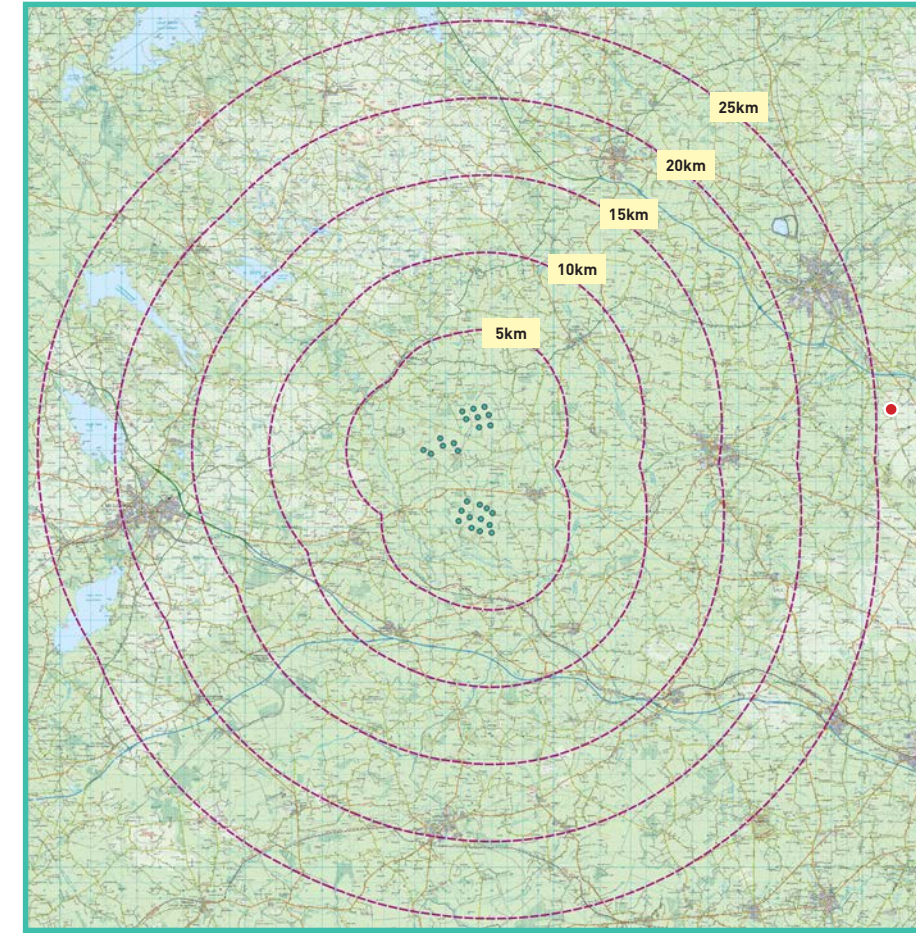
# View Point 02

# Castleboy

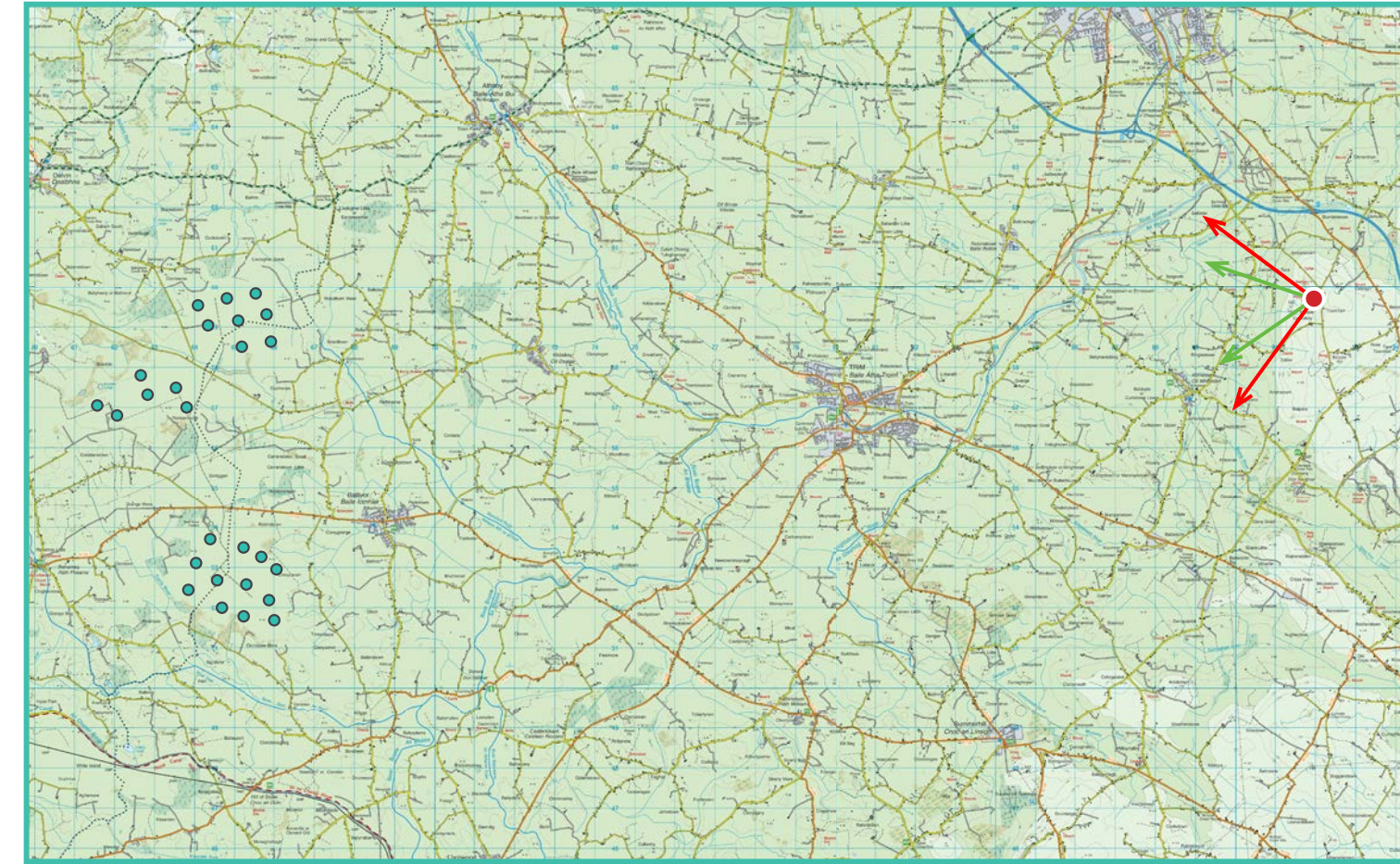
## Photomontage 02

View from the Hill of Tara, designated as County Meath Scenic View V43 and V44, in townland of Castleboy (E.D. Tara), approximately 26.1km east from the nearest turbine.

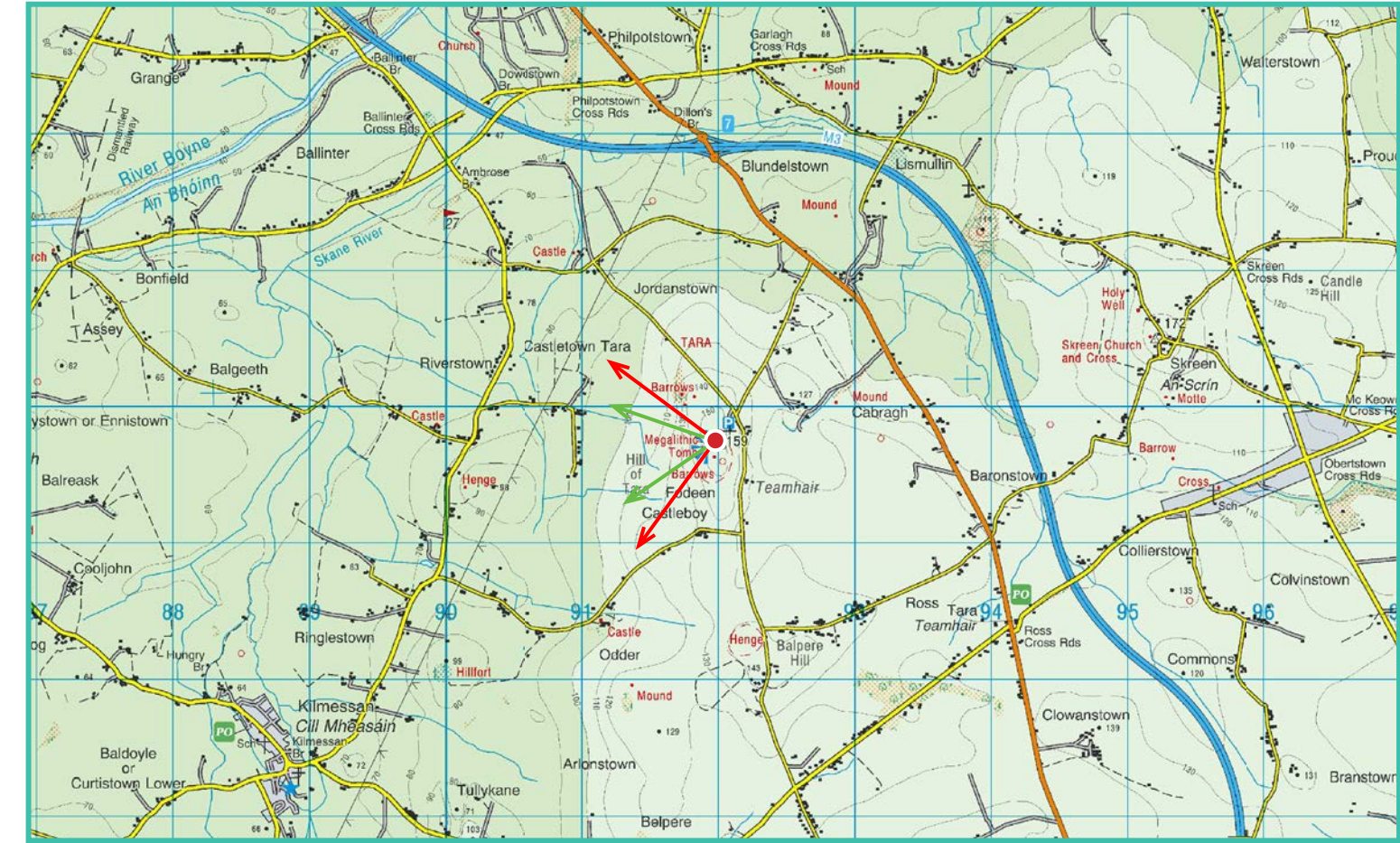
View point grid reference	E 691935 N 759747
Date of image taken	14/10/2020
Time of image taken	11:09am
View point elevation	151m
Angle of Views	90° / 53.5°
View Direction (Image Centre)	261°
Horizontal extent of proposed turbines	18°
Distance to nearest proposed turbine	26.1km (T20)
Number of proposed turbines visible	26/26
Turbine Hub Height	115m
Turbine Tip Height	200m
Turbine Rotor Diameter	170m
Montage Type	Type 4* Photomontage / Photowire / Survey / Scale Verifiable
Camera & Lens	Canon 5D Mark III / Full Frame Sensor with a 50mm Lens
Tripod	Manfrotto 190X extended to approx 1.5m.
Guidance	* Visual Representation of Development Proposals, Landscape Institute Technical Guidance Note 06/19, 2019
Map Licence	© Ordnance Survey Ireland. All rights reserved. Licence number CYAL50267517



View point relative to 25km radius.



View point relative to wind farm site.



Detail of view point location.

90° View Extent

### Map Legend

- Area shown in 90° view
- Area shown in 53.5° view
- View Point

### Wireline Legend

- Proposed Ballivor Wind Farm
- Proposed Met Mast (115m)
- Existing Wind Farms
- Permitted Wind Farms
- Other Proposed Wind Farms
- Under Construction Wind Farms

### Prepared by

MKO  
Planning & Environmental Consultants  
Tuam Road, Galway.

Tel: (091) 73 56 11  
E-mail: info@mkofireland.ie  
Website: www.mkofireland.ie



Key Image at 120°



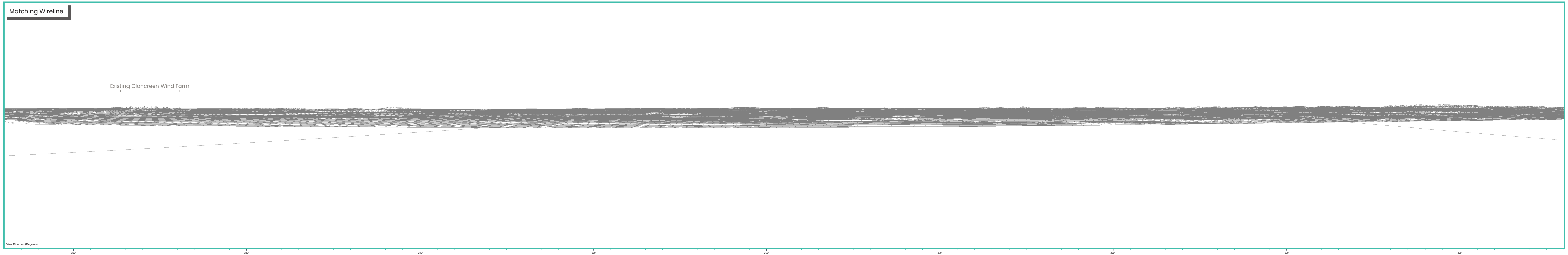
53.5° View Extent



Existing View at 90°



Matching Wireline

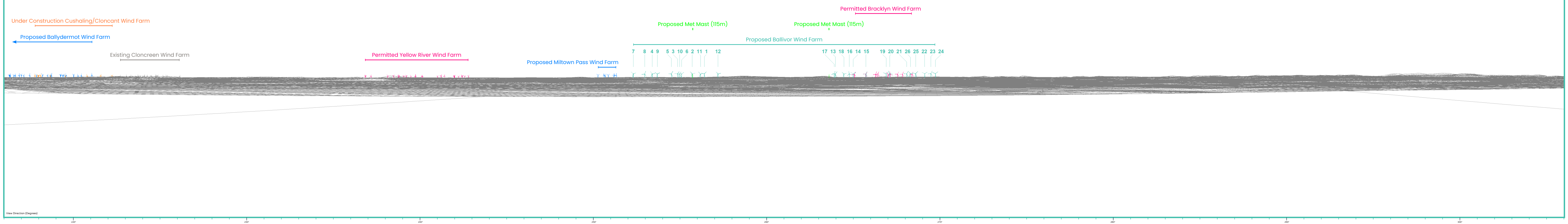




Proposed Photomontage with Cumulative at 90°



Matching Wireline





Proposed Photomontage with Cumulative at 53.5°





