

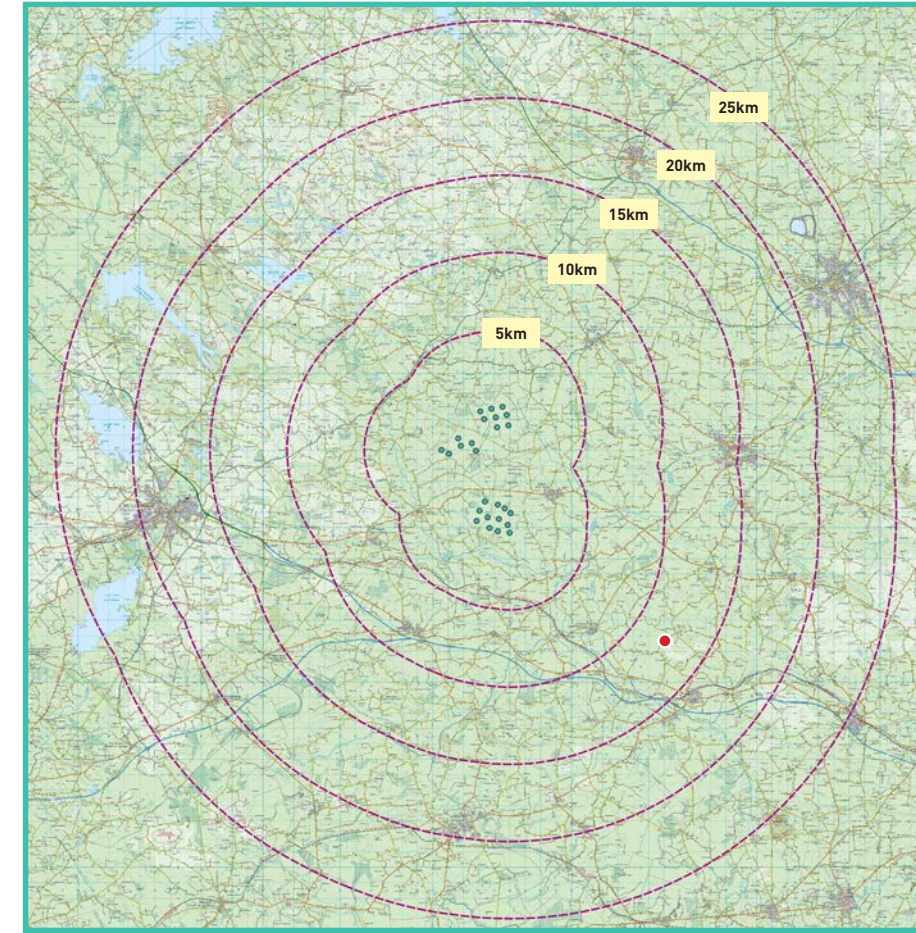
View Point 05

Rathcore

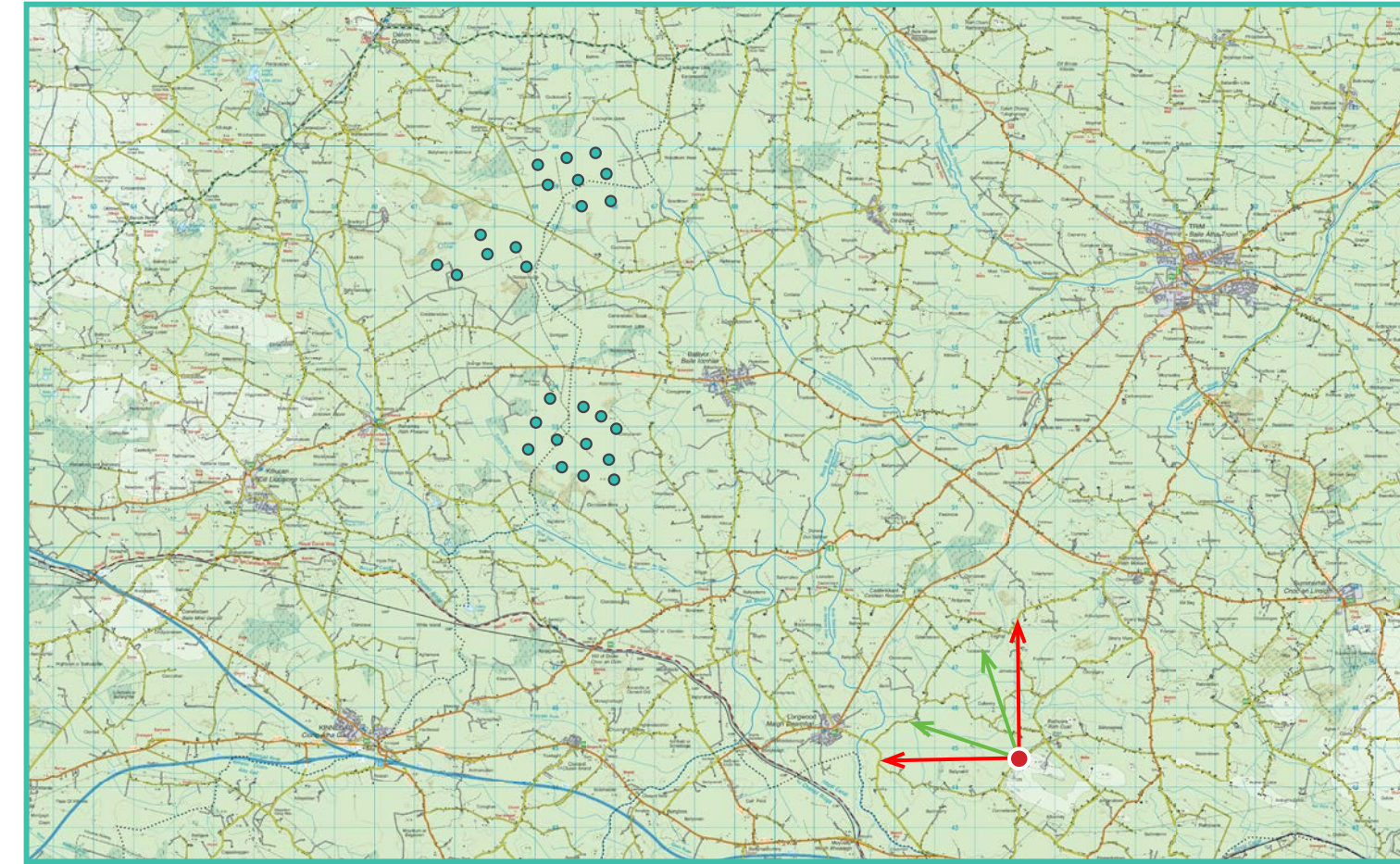
Photomontage 05

View from a local road west of the R159 in the townland of Rathcore, designated as County Meath Scenic View V57, approximately 12.2 km south-east of the nearest turbine.

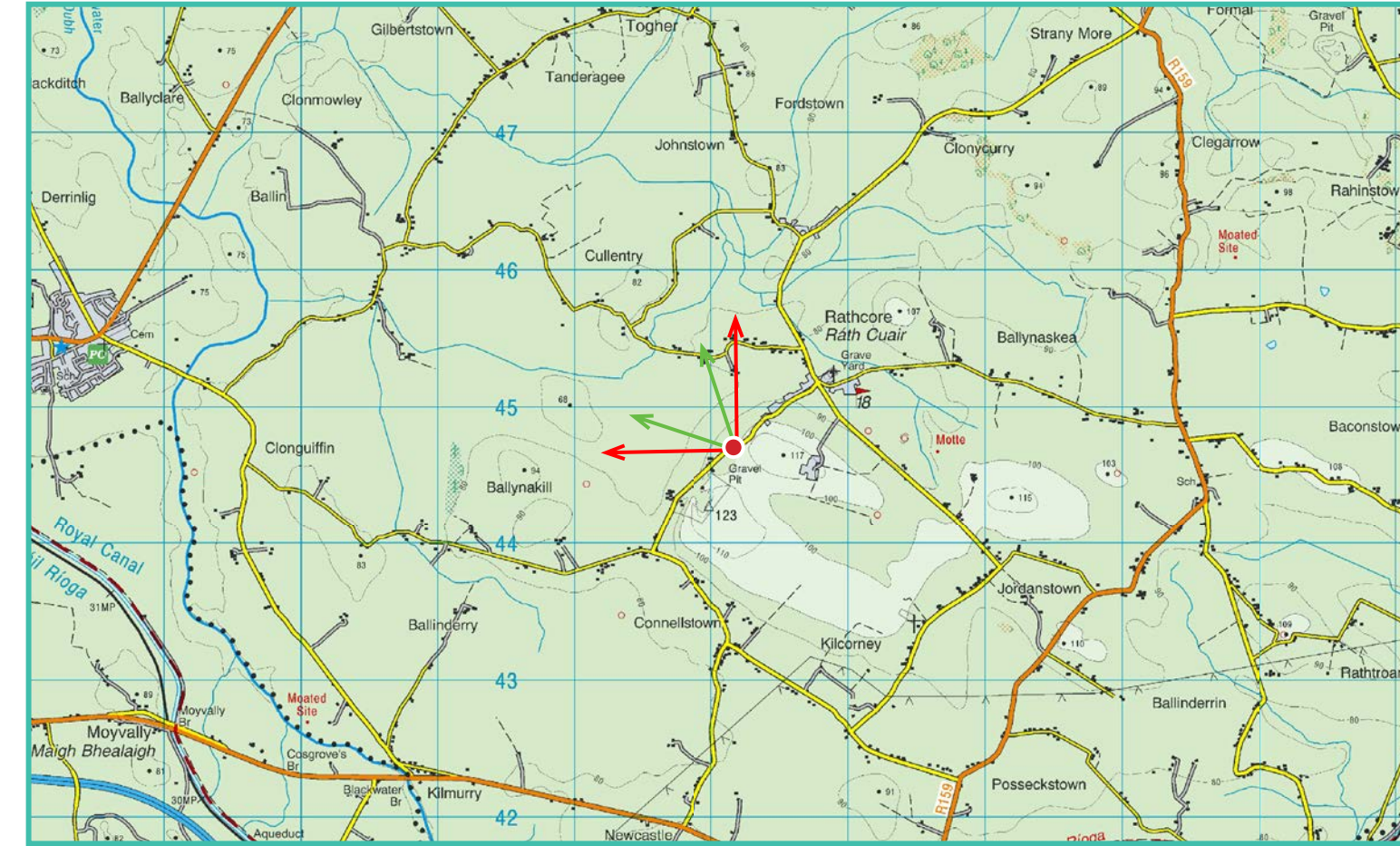
View point grid reference	E 676046 N 744706
Date of image taken	14/10/2020
Time of image taken	1:41pm
View point elevation	95m
Angle of Views	90° / 53.5°
View Direction (Image Centre)	314°
Horizontal extent of proposed turbines	23°
Distance to nearest proposed turbine	12.2km (T7)
Number of proposed turbines visible	26/26
Turbine Hub Height	115m
Turbine Tip Height	200m
Turbine Rotor Diameter	170m
Montage Type	Type 4* Photomontage / Photowire / Survey / Scale Verifiable
Camera & Lens	Canon 5D Mark III / Full Frame Sensor with a 50mm Lens
Tripod	Manfrotto 190X extended to approx 1.5m.
Guidance	* Visual Representation of Development Proposals, Landscape Institute Technical Guidance Note 06/19, 2019
Map Licence	© Ordnance Survey Ireland. All rights reserved. Licence number CYAL50267517



View point relative to 25km radius.



View point relative to wind farm site.



Detail of view point location.

Map Legend

- Area shown in 90° view
- Area shown in 53.5° view
- View Point

Wireline Legend

- Proposed Ballivor Wind Farm
- Proposed Met Mast (115m)
- Existing Wind Farms
- Permitted Wind Farms
- Other Proposed Wind Farms
- Under Construction Wind Farms

Prepared by

MKO
Planning & Environmental Consultants
Tuam Road, Galway.

Tel: (091) 73 56 11
E-mail: info@mkofireland.ie
Website: www.mkofireland.ie



90° View Extent

Key Image at 120°

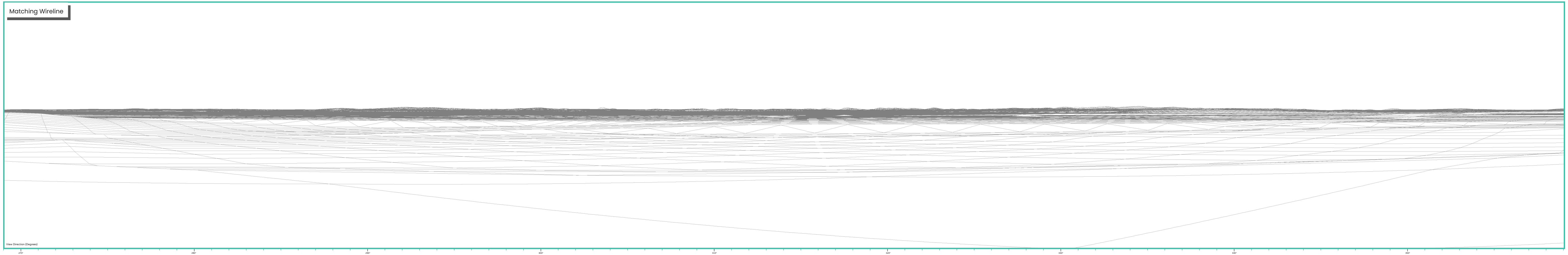


53.5° View Extent

Existing View at 90°



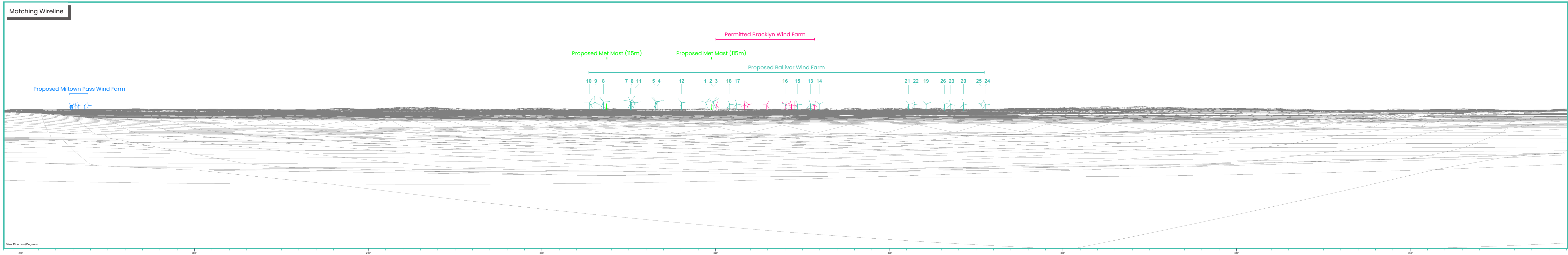
Matching Wireline



Proposed Photomontage with Cumulative at 90°



Matching Wireline



Proposed Photomontage with Cumulative at 53.5°



