

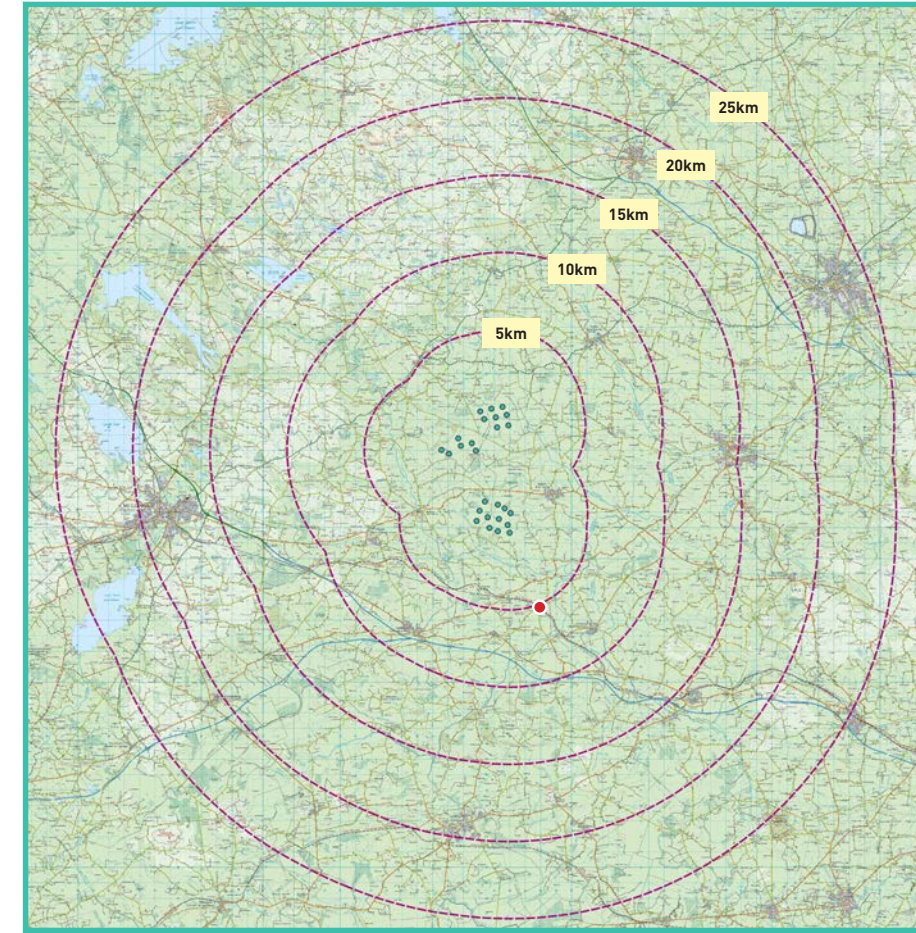
View Point 06

Blackshade

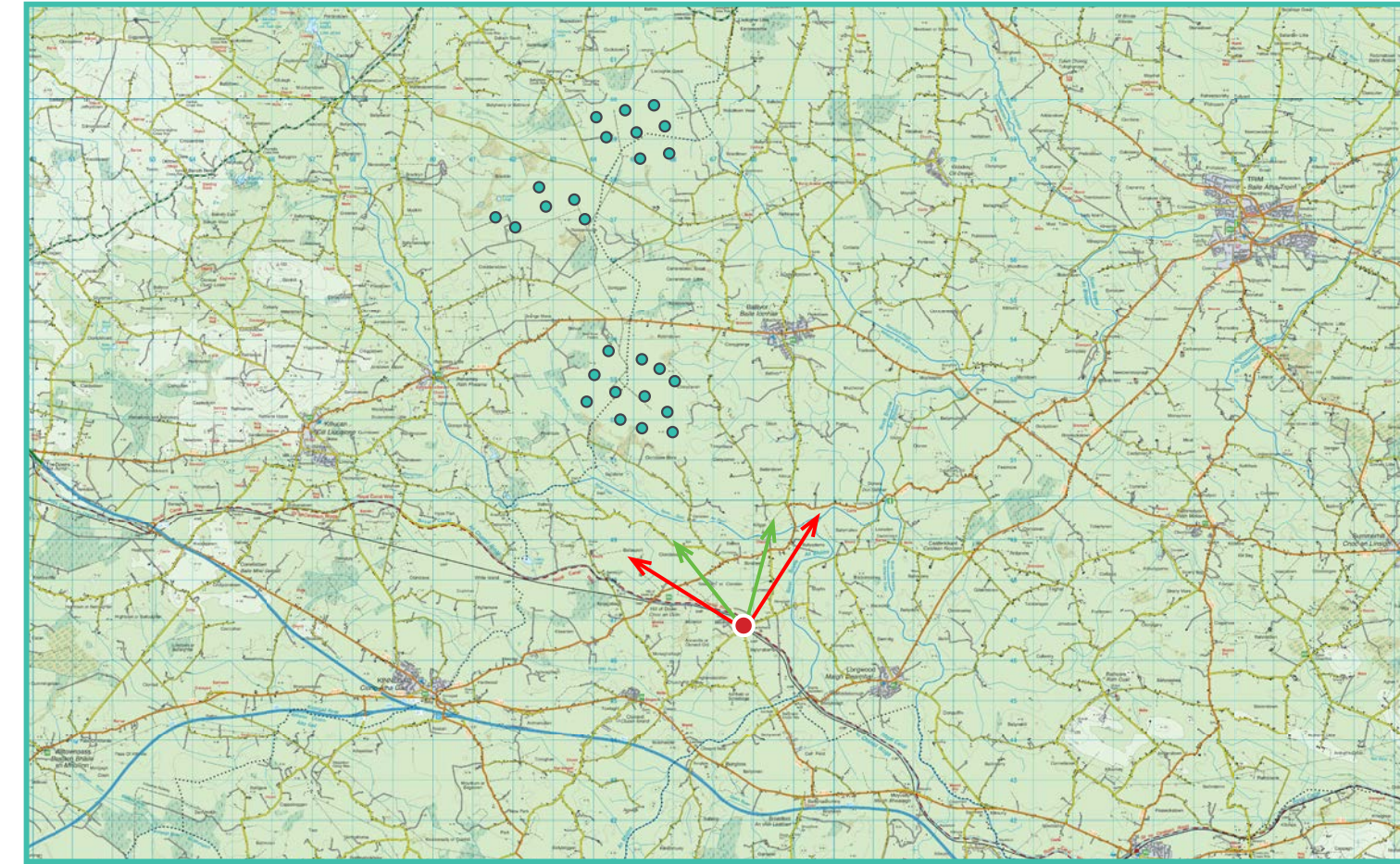
Photomontage 06

View from the L-8030 local road in the townland of Blackshade, designated as County Meath Scenic View V83, approximately 5.1 km south-east of the nearest turbine.

View point grid reference	E 667801 N 746874
Date of image taken	28/07/2020
Time of image taken	9:59am
View point elevation	72m
Angle of Views	90° / 53.5°
View Direction (Image Centre)	337°
Horizontal extent of proposed turbines	22°
Distance to nearest proposed turbine	5.1km (17)
Number of proposed turbines visible	6/26
Turbine Hub Height	115m
Turbine Tip Height	200m
Turbine Rotor Diameter	170m
Montage Type	Type 4* Photomontage / Photowire / Survey / Scale Verifiable
Camera & Lens	Canon 5D Mark III / Full Frame Sensor with a 50mm Lens
Tripod	Manfrotto 190X extended to approx 1.5m.
Guidance	* Visual Representation of Development Proposals, Landscape Institute Technical Guidance Note 06/19, 2019
Map Licence	© Ordnance Survey Ireland. All rights reserved. Licence number CYAL50267517

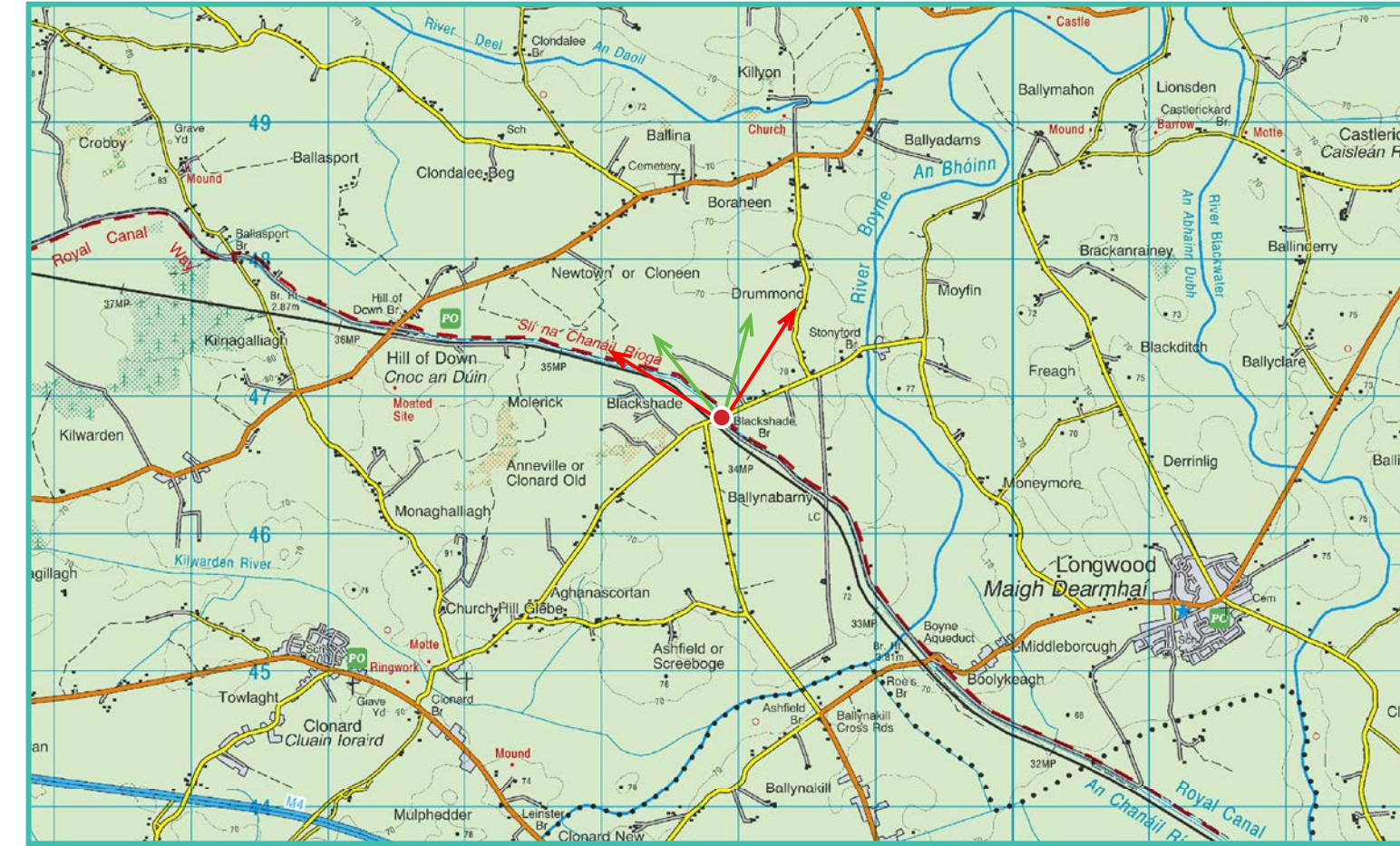


View point relative to 25km radius.



View point relative to wind farm site.

90° View Extent



Detail of view point location.

Map Legend

- Area shown in 90° view
- Area shown in 53.5° view
- View Point

Wireline Legend

- Proposed Ballivor Wind Farm
- Proposed Met Mast (115m)
- Existing Wind Farms
- Permitted Wind Farms
- Other Proposed Wind Farms
- Under Construction Wind Farms

Prepared by

MKO
Planning & Environmental Consultants
Tuam Road, Galway.

Tel: (091) 73 56 11
E-mail: info@mkofireland.ie
Website: www.mkofireland.ie



Key Image at 120°

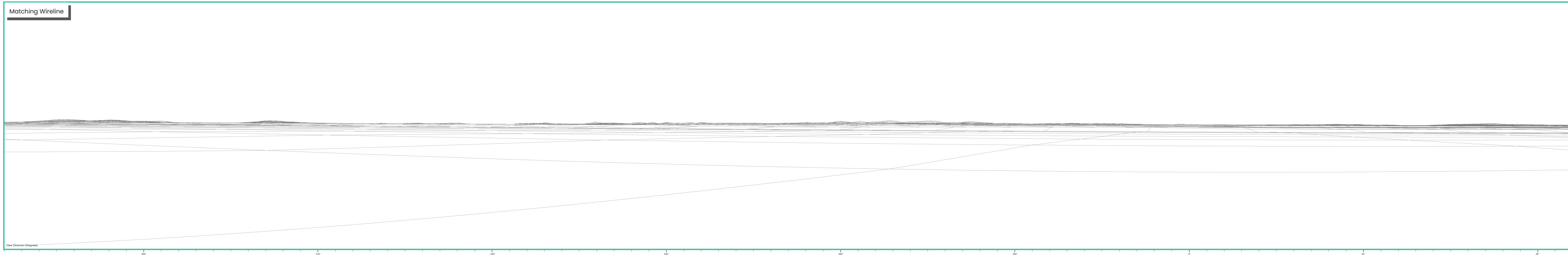


53.5° View Extent

Existing View at 90°



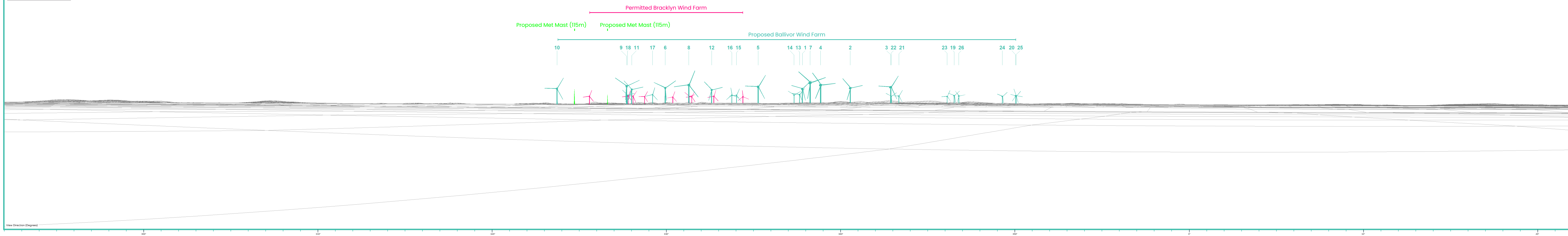
Matching Wireline



Proposed Photomontage with Cumulative at 90°



Matching Wireline



Proposed Photomontage with Cumulative at 53.5°



