

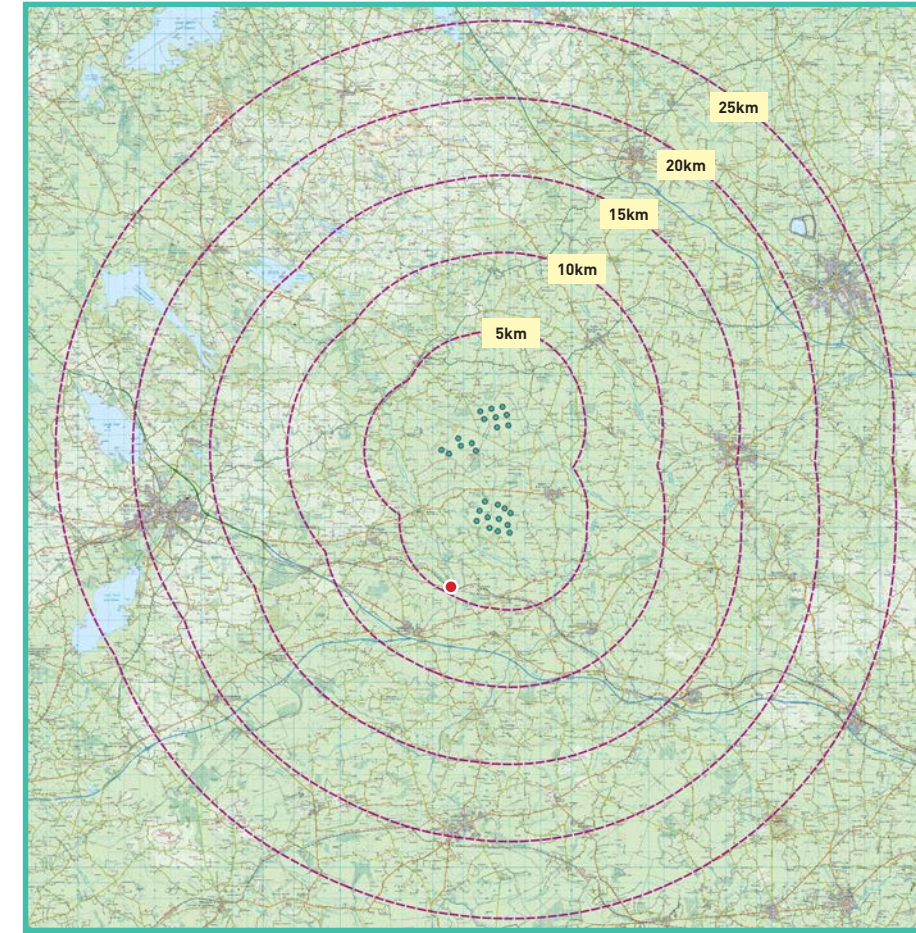
View Point 07

Croboy

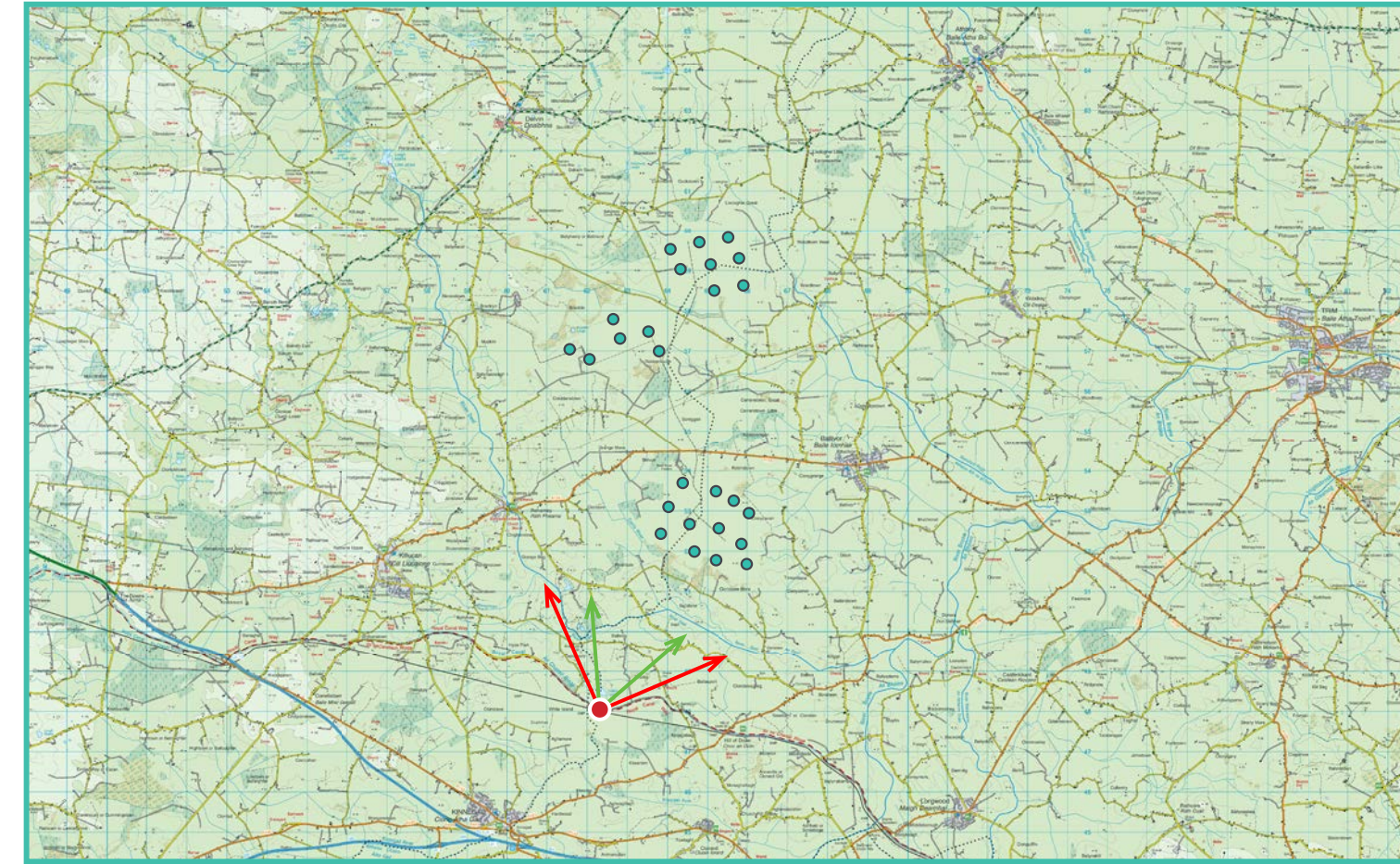
Photomontage 07

View from the Royal Canal Greenway in the townland of Croboy, approximately 4.6km south of the nearest turbine.

View point grid reference	E 662127 N 748131
Date of image taken	13/10/2020
Time of image taken	11:58am
View point elevation	76m
Angle of Views	90° / 53.5°
View Direction (Image Centre)	21°
Horizontal extent of proposed turbines	51°
Distance to nearest proposed turbine	4.6km (T9)
Number of proposed turbines visible	16/26
Turbine Hub Height	115m
Turbine Tip Height	200m
Turbine Rotor Diameter	170m
Montage Type	Type 4* Photomontage / Photowire / Survey / Scale Verifiable
Camera & Lens	Canon 5D Mark III / Full Frame Sensor with a 50mm Lens
Tripod	Manfrotto 190X extended to approx 1.5m.
Guidance	* Visual Representation of Development Proposals, Landscape Institute Technical Guidance Note 06/19, 2019
Map Licence	© Ordnance Survey Ireland. All rights reserved. Licence number CYAL50267517

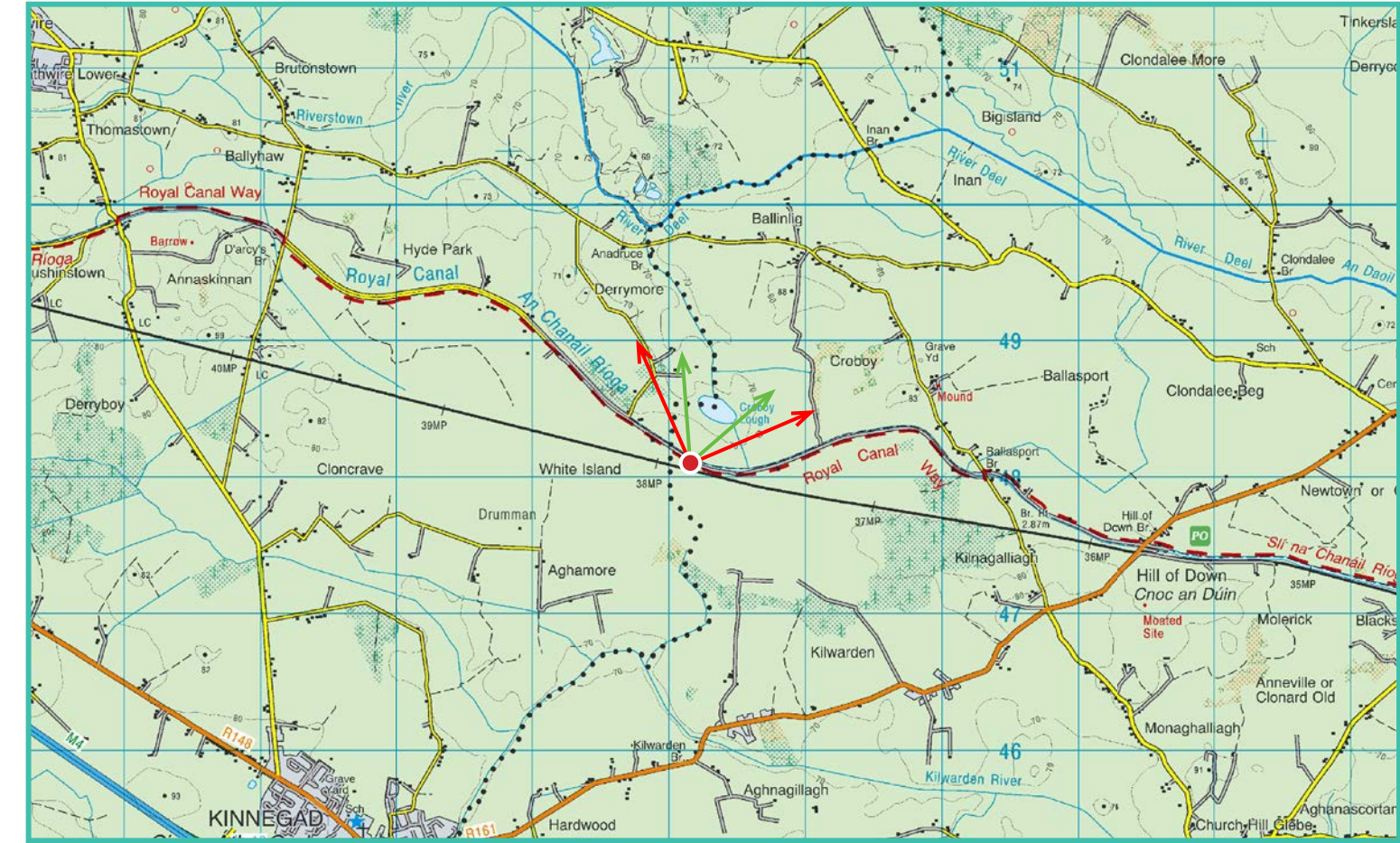


View point relative to 25km radius.



View point relative to wind farm site.

90° View Extent



Detail of view point location.

Map Legend

- Area shown in 90° view
- Area shown in 53.5° view
- View Point

Wireline Legend

- Proposed Ballivor Wind Farm
- Proposed Met Mast (115m)
- Existing Wind Farms
- Permitted Wind Farms
- Other Proposed Wind Farms
- Under Construction Wind Farms

Prepared by

MKO
Planning & Environmental Consultants
Tuam Road, Galway.

Tel: (091) 73 56 11
E-mail: info@mkoireland.ie
Website: www.mkoireland.ie



Key Image at 120°

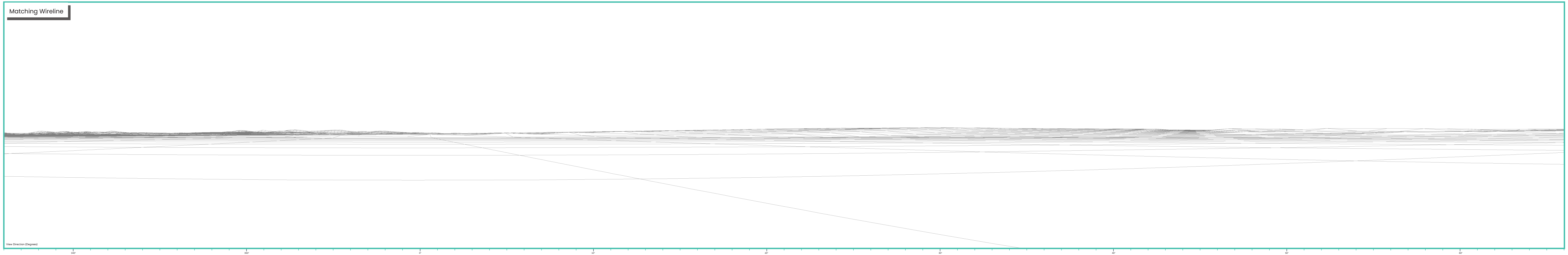


53.5° View Extent

Existing View at 90°



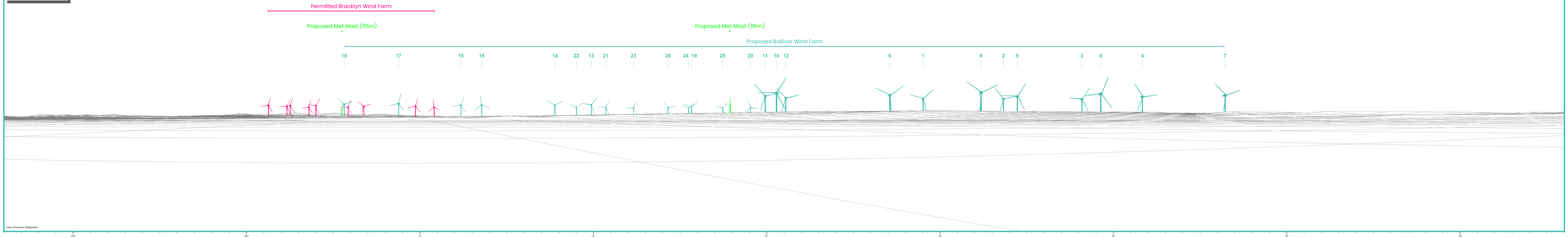
Matching Wireline



Proposed Photomontage with Cumulative at 90°



Matching Wireline



Proposed Photomontage with Cumulative at 53.5°



← Permitted Bracklyn Wind Farm

Proposed Met Mast (115m)

Proposed Met Mast (115m)

Proposed Ballivor Wind Farm

18 17 15 16 14 22 13 21 23 26 24 19 25 20 11 10 12 6 1 9 2 5 3 8 4 7

