

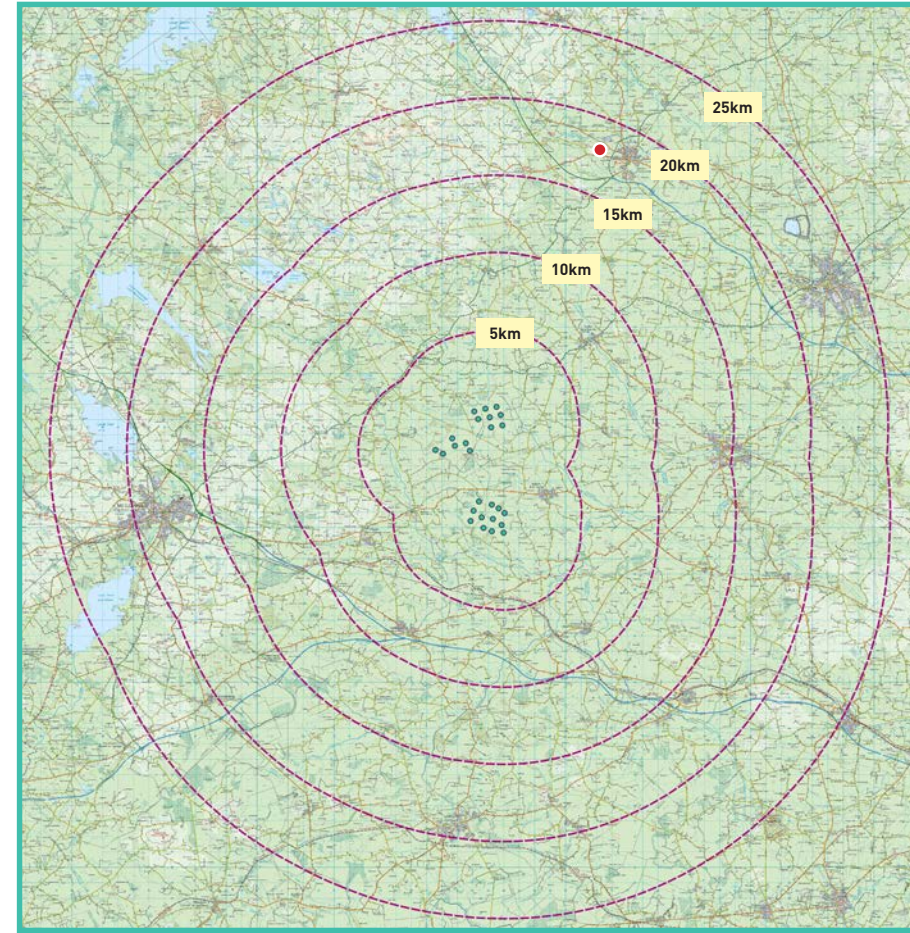
View Point 14

Commons of Lloyd

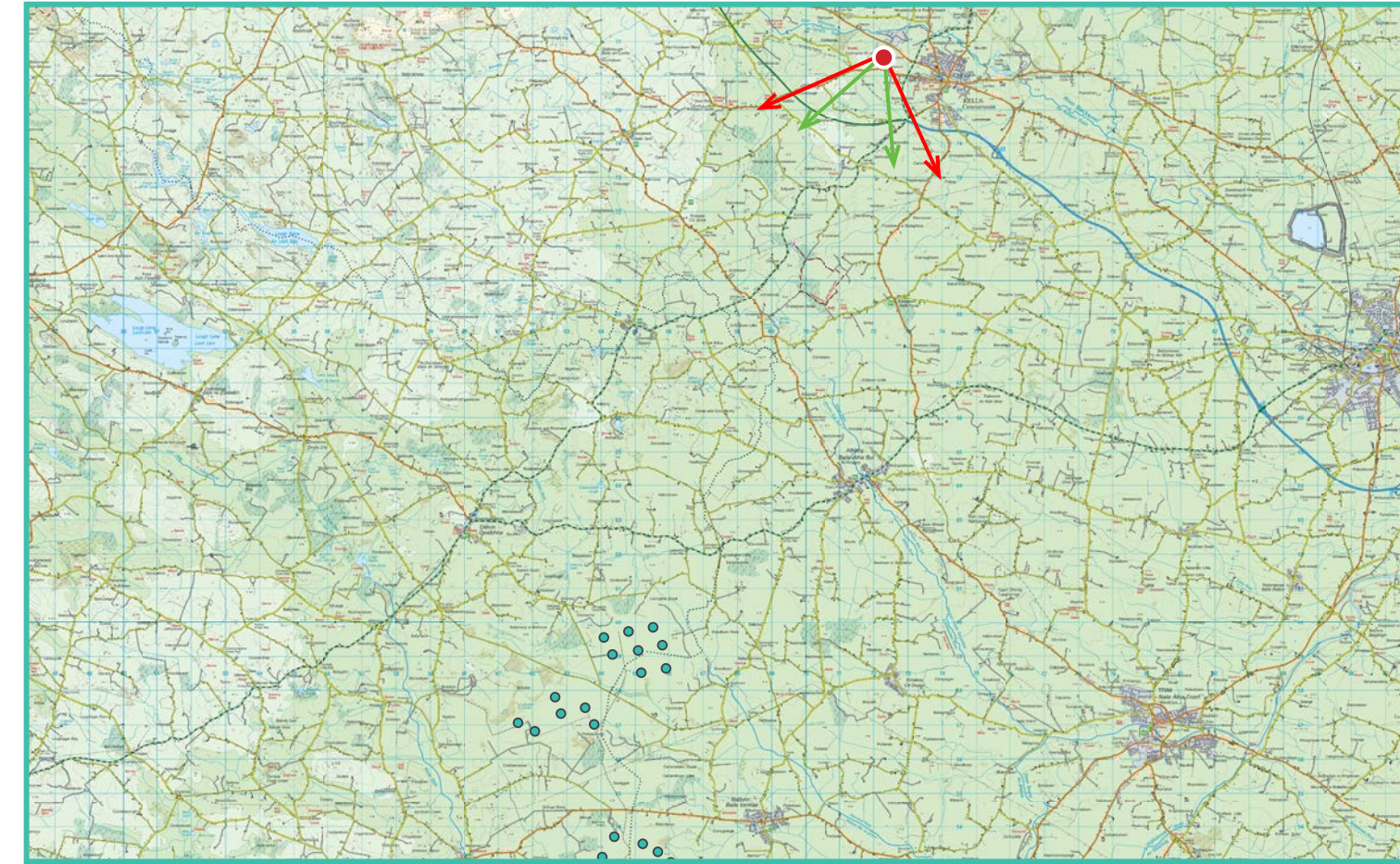
Photomontage 14

View from the Commons of Lloyd, designated as County Meath Scenic View V13, in the townland of the Commons of Lloyd, approximately 17.9 km north-east of the nearest turbine.

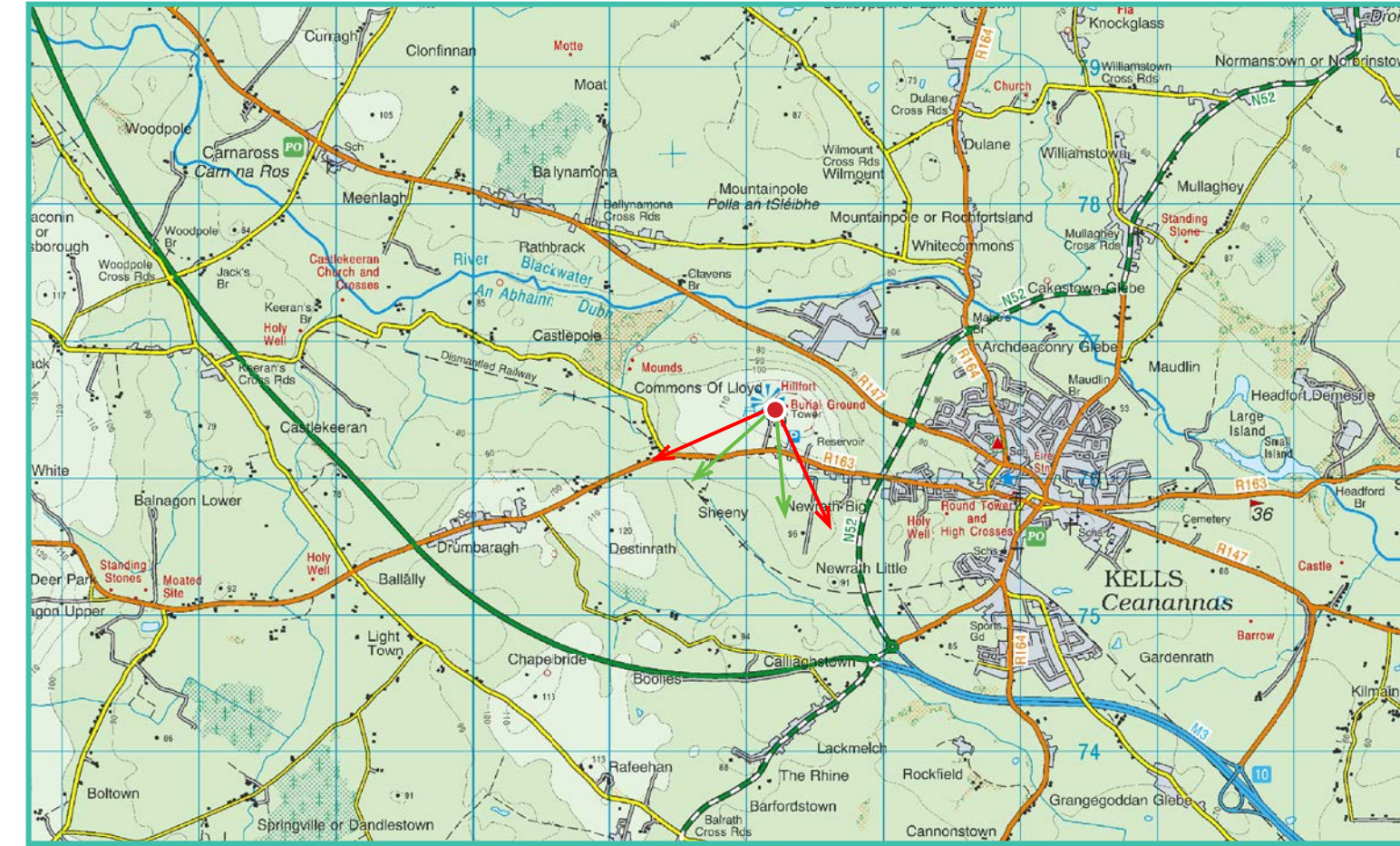
View point grid reference	E 672214 N 776482
Date of image taken	06/08/2020
Time of image taken	11:14am
View point elevation	121m
Angle of Views	90° / 53.5°
View Direction (Image Centre)	201°
Horizontal extent of proposed turbines	14°
Distance to nearest proposed turbine	17.9km (t24)
Number of proposed turbines visible	26/26
Turbine Hub Height	115m
Turbine Tip Height	200m
Turbine Rotor Diameter	170m
Montage Type	Type 4* Photomontage / Photowire / Survey / Scale Verifiable
Camera & Lens	Canon 5D Mark III / Full Frame Sensor with a 50mm Lens
Tripod	Manfrotto 190X extended to approx 1.5m.
Guidance	* Visual Representation of Development Proposals, Landscape Institute Technical Guidance Note 06/19, 2019
Map Licence	© Ordnance Survey Ireland. All rights reserved. Licence number CYAL50267517



View point relative to 25km radius.



View point relative to wind farm site.



Detail of view point location.

Map Legend

- Area shown in 90° view
- Area shown in 53.5° view
- View Point

Wireline Legend

- Proposed Ballivor Wind Farm
- Proposed Met Mast (115m)
- Existing Wind Farms
- Permitted Wind Farms
- Other Proposed Wind Farms
- Under Construction Wind Farms

Prepared by

MKO
Planning & Environmental Consultants
Tuam Road, Galway.

Tel: (091) 73 56 11
E-mail: info@mkofireland.ie
Website: www.mkofireland.ie



90° View Extent

Key Image at 120°

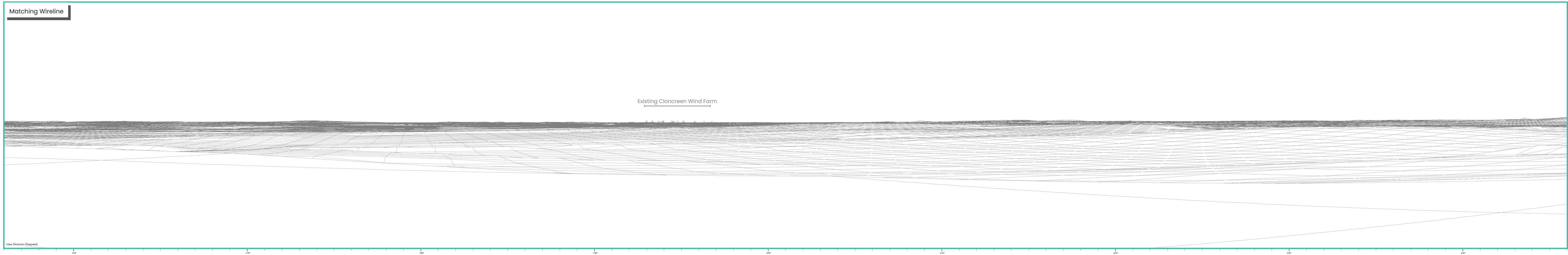


53.5° View Extent

Existing View at 90°



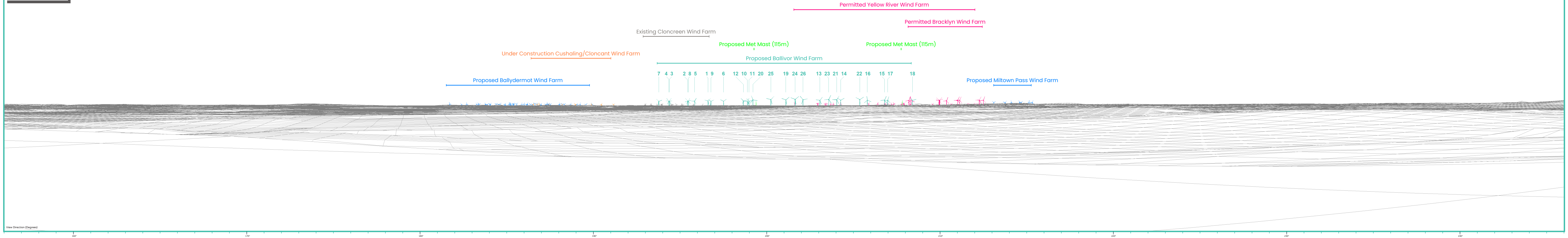
Matching Wireline



Proposed Photomontage with Cumulative at 90°



Matching Wireline



Proposed Photomontage with Cumulative at 53.5°



