

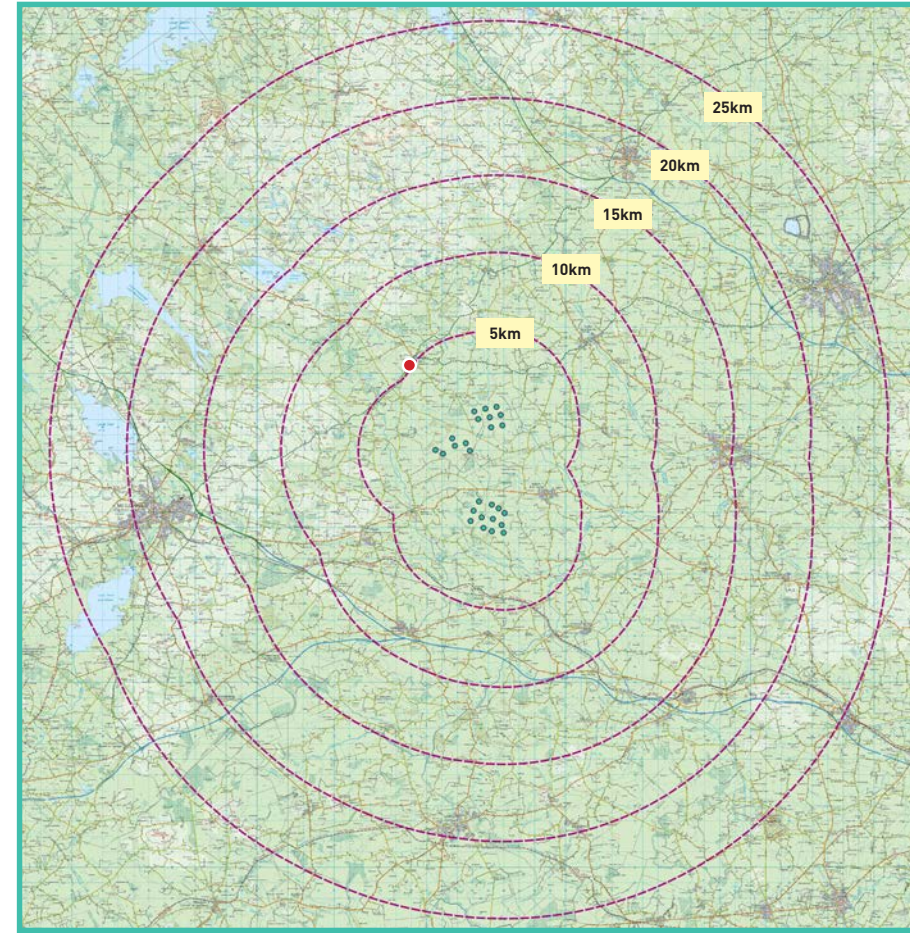
View Point 18

Clonyn

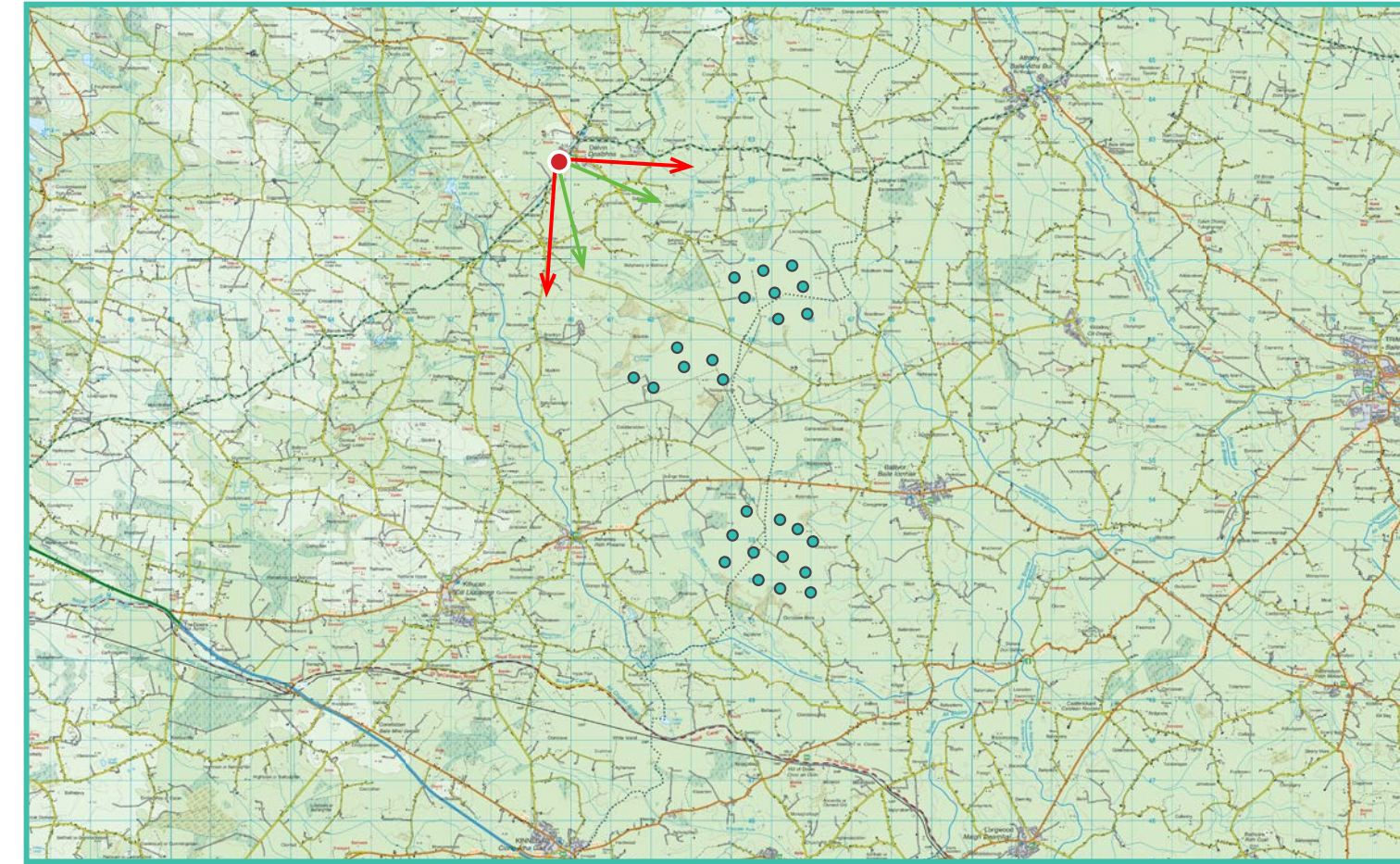
Photomontage 18

View from the N52 in the townland of Clonyn, approximately 5.4 km north-west of the nearest turbine.

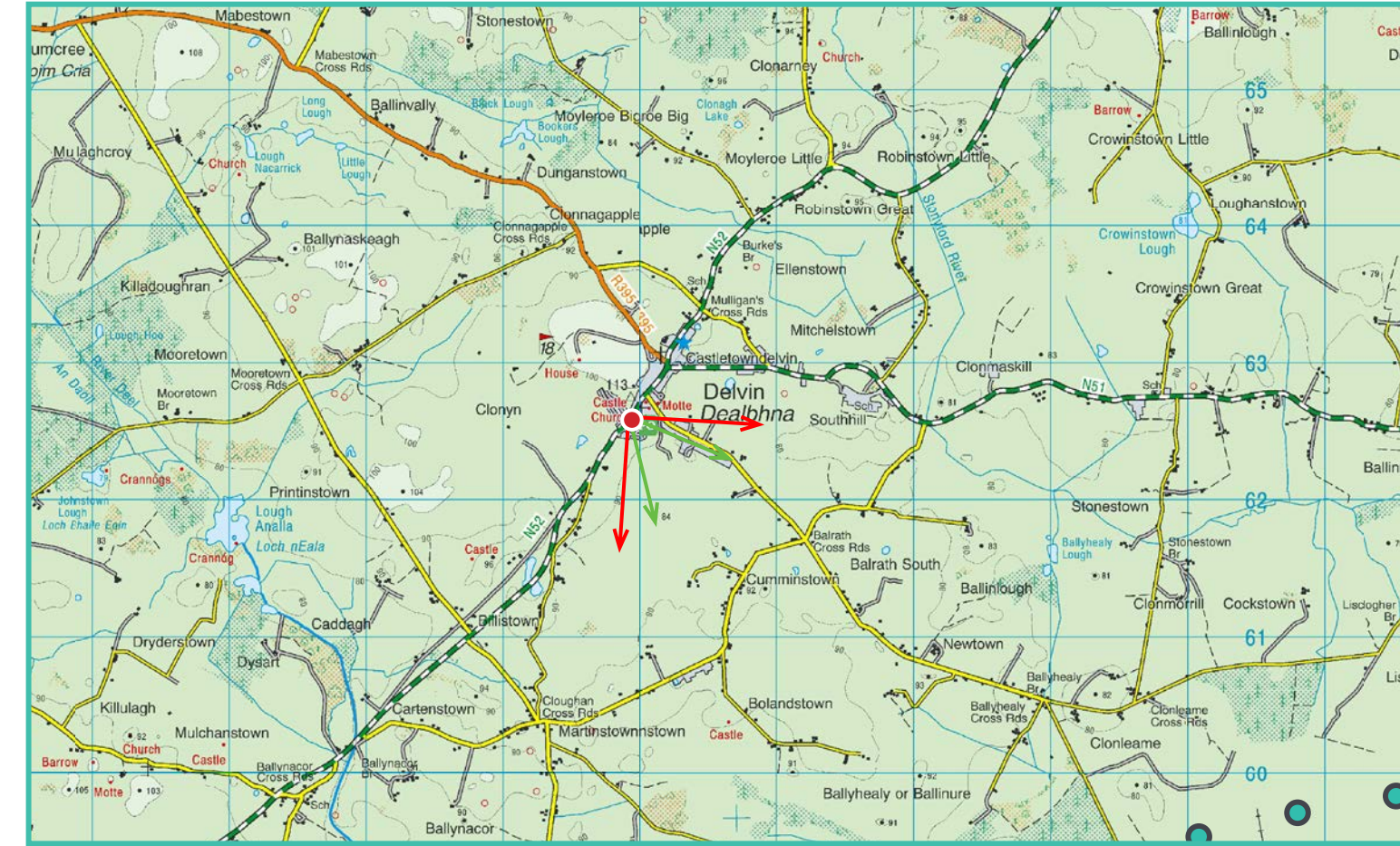
View point grid reference	E 659731 N 762458
Date of image taken	28/07/2020
Time of image taken	1:18pm
View point elevation	95m
Angle of Views	90° / 53.5°
View Direction (Image Centre)	138°
Horizontal extent of proposed turbines	48°
Distance to nearest proposed turbine	5.4km (T22)
Number of proposed turbines visible	14/26
Turbine Hub Height	115m
Turbine Tip Height	200m
Turbine Rotor Diameter	170m
Montage Type	Type 4* Photomontage / Photowire / Survey / Scale Verifiable
Camera & Lens	Canon 5D Mark III / Full Frame Sensor with a 50mm Lens
Tripod	Manfrotto 190X extended to approx 1.5m.
Guidance	* Visual Representation of Development Proposals, Landscape Institute Technical Guidance Note 06/19, 2019
Map Licence	© Ordnance Survey Ireland. All rights reserved. Licence number CYAL50267517



View point relative to 25km radius.



View point relative to wind farm site.



Detail of view point location.

90° View Extent

Map Legend

- Area shown in 90° view
- Area shown in 53.5° view
- View Point

Wireline Legend

- Proposed Ballivor Wind Farm
- Proposed Met Mast (115m)
- Existing Wind Farms
- Permitted Wind Farms
- Other Proposed Wind Farms
- Under Construction Wind Farms

Prepared by

MKO
Planning & Environmental Consultants
Tuam Road, Galway.

Tel: (091) 73 56 11
E-mail: info@mkoireland.ie
Website: www.mkoireland.ie



Key Image at 120°

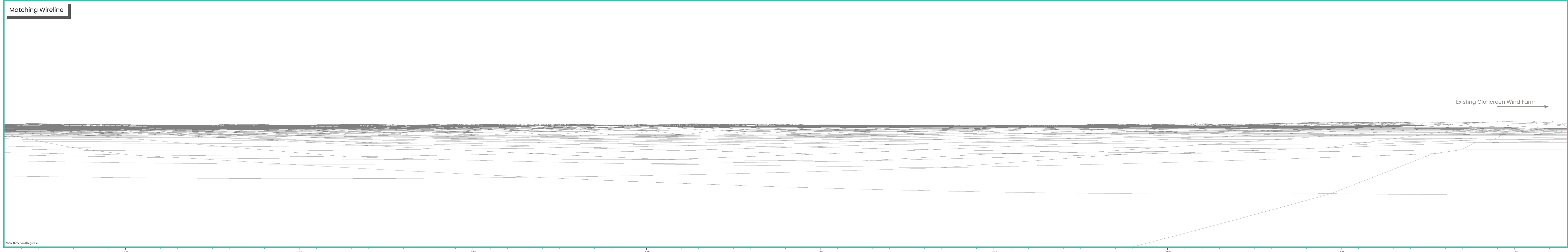


53.5° View Extent

Existing View at 90°



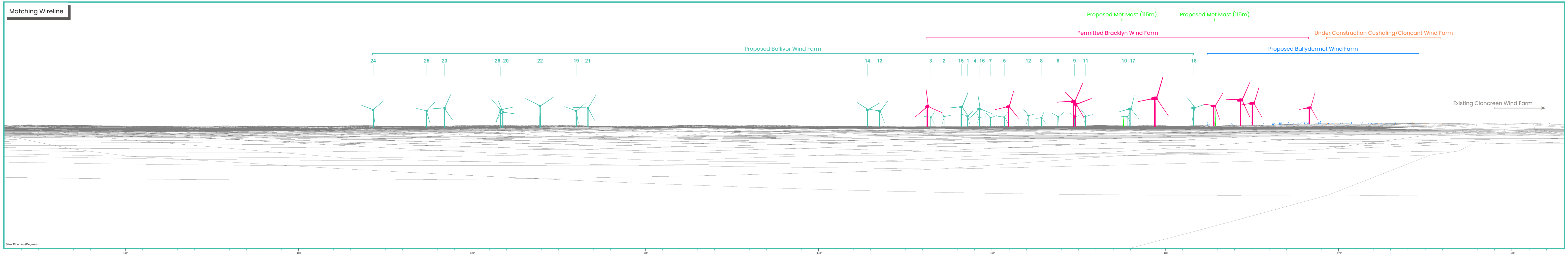
Matching Wireline



Proposed Photomontage with Cumulative at 90°



Matching Wireline



Proposed Photomontage with Cumulative at 53.5°



View Direction (Degrees)

120°

130°

140°

150°

160°

